

VPS Intellicrate[®] Supplier Guide



VPS - Industry Solutions

Viscount Pooling Systems (VPS)

Viscount Pooling Systems (VPS) delivers a new era of material handling solutions with the launch of the highest quality at least cost returnable crate system in Australia. With 4 brand new high speed fully automated wash facilities throughout Australia, VPS' cutting edge technology capabilities will add value throughout your entire supply chain.

Quality Assurance - A new benchmark in crate integrity and hygiene

VPS has invested in world class centrifugal drying equipment that ensures cleaner, more hygienic crates than previous industry standards. VPS' facilities feature automated controlled sanitisation and continuously monitored HACCP processes including lot tracking through crate RFID.

Customer Focused Solutions; the right crate at the right time

VPS has developed an intuitive and interactive web-based ordering platform optimised for all devices to ensure customers experience seamless service and flexibility to manage their accounts. VPS' RFID enabled crate technology provides a unique tracking capability that closes the loop on crates moving through the supply chain.

Commitment to Sustainability

VPS has an unwavering focus on responsible manufacturing and leaving the lowest environmental footprint. The wash stream is recycled and disposed of in accordance with industry best practise. At end of life VPS' crates are recycled into products manufactured for non-food related applications, delivering a complete cradle to grave supply chain solution.

An innovative platform for the future

VPS' unique RFID platform drives traceability from paddock to plate to guarantee supply chain integrity. VPS use proven sales and operational planning methodology to deliver the least cost, most efficient crate pooling network, resulting in the highest levels of crate availability for Australian customers.

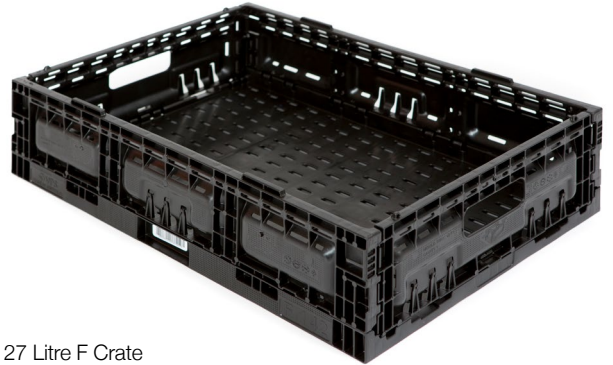


VPS Intellicrate®

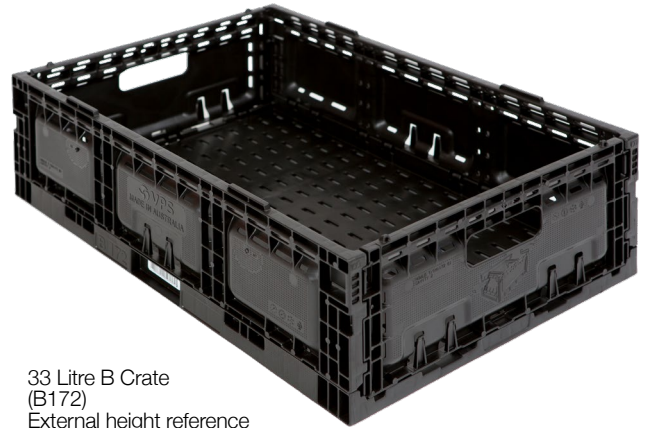
Materials Handling Solutions you can trust

Grower / Packhouse

- Knock down quick release latches. Easy to assemble and disassemble.
- Works equally well on manual or fully automated systems.
- Smooth interiors ensures minimal damage to produce.
- Ergonomically designed bevelled hand holds.
- Fixed trip fee for agreed cycle days.
- RFID enabled Intellicrate® tracks crates throughout the supply chain.
- Each crate has the same footprint folded or loaded.



27 Litre F Crate
(F142)
External height reference



33 Litre B Crate
(B172)
External height reference



41 Litre C Crate
(C210)
External height reference

VPS Intellicrate® Specifications



Specifications	E Crate	A Crate	F Crate	B Crate	C Crate
Material Code	E 12L	A 17L	F 27L	B 33L	C 41L
Colour	Black	Black	Black	Black	Black
Exterior dimensions (mm) length x width x height	385 X 289 X 129.5	578 X 385 X 94.5	578 x 385 x 142.5	578 x 385 x 172.5	578 x 385 x 210.5
Interior dimensions (mm) length x width x height	360 X 261 X 122	553 X 357 X 87	553 x 357 x 135	553 x 357 x 165	553 x 357 x 203
Folded	385 X 289 X 34	578 X 385 X 34	578 x 385 x 34	578 x 385 x 34	578 x 385 x 34
Cubic Capacity (litres)	12	17	27	33	41
Weight (kg)	0.81 Kg +/- 3%	1.16 Kg +/- 3%	1.39 +/- 6%	1.53 +/- 6%	1.75 +/- 6%
Gross Unit Loads (kg inclusive of crate)	6	9	16	16	16
Incremental Folded Height (mm)	34	34	34	34	34
Material	Food grade polypropylene				
Operating Temperature Range	0°C to +40 °C				



Please ensure all packing staff are aware of the correct crate assembly and disassembly instructions

Assembly Instructions

- 1 From a folded start position, lift the two long walls outwards by 90 degrees.



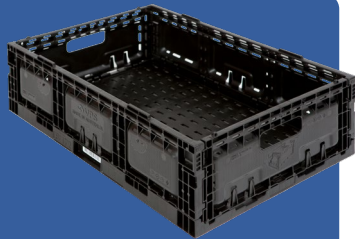
- 2 Lift the two short walls outwards by 90 degrees.



- 3 Make sure each wall correctly locks into corresponding recess, securely lock all corners.



- 4 For a crate to be locked into position you must hear a loud audible CLICK at the top of each of the 4 corners of the crate. If the side walls are not correctly engaged, the crate may collapse under load.



- 5 When packing your load ensure the crate above is securely locked to the crate beneath to assist in keeping your load stable.



Disassembly Instructions

- 1 Tap the side walls in.



- 2 Fold the two short walls inward to the closed position.



- 3 Fold the two long walls inward to the folded closed position.



Crates Supplied from VPS Wash Centres

- Intellicrates® will be available from VPS wash centres in pallet quantities of 192 units, column stacked to a 6 per layer configuration.
- Pallets should be transported and stored two high.

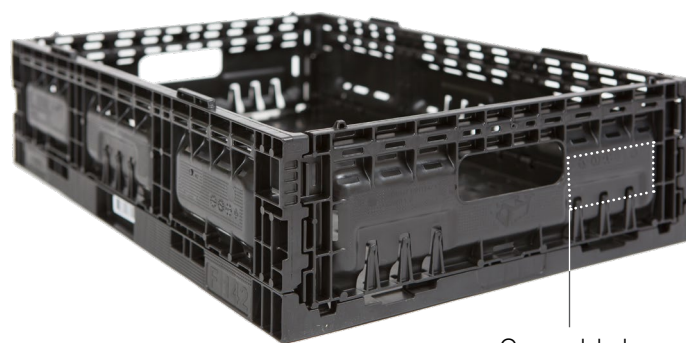


Order Quantity

	27L F Crate	33L B Crate	41L C Crate	A Crate	E Crate
Max layers of folded crates	32	32	32	32	32
Crates per layer	6	6	6	6	12
Folded crates per timber pallet	192	192	192	192	384
Height (inc. 150mm pallet)	1234mm	1234mm	1234mm	1234mm	1234mm
Weight (inc. pallet)	≤500kg	≤500kg	≤500kg	<500kg	<500kg

VPS Transfer Process

- Please transfer crates using the VPS online portal at the time of transfer www.viscountpooling.com.
- Produce identification should only be placed into the crate label holder. Paper labels only are permitted. The use of stickers are prohibited.
- Location lugs on the long walls of the crates enable secure locks to the crates below and above. Ensure crates are locked into position before transit.

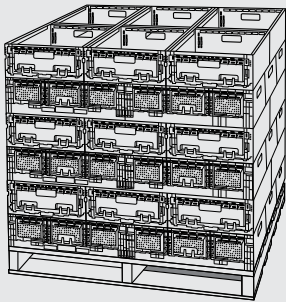


VPS Intellicrate® Stacking for Transportation

Each inbound pallet of crates sent to the retailers **must be made safe, stable and secure**. The items contained in this document are recommendations as a starting point towards stable and secure loads. Ensuring safe, stable and secure loads remains the responsibility of the sender.



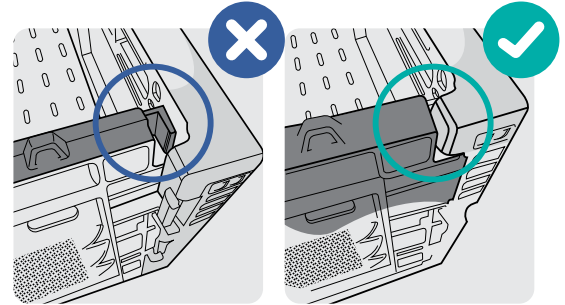
Packing for Transportation



Cross Stacking

Where possible crates should be cross stacked to ensure maximum stability. Each alternative layer of crates stacked in opposite directions for the total height of the pallet.

Do not allow crates to overhang the pallet as this could lead to safety issues in the supply chain. Crates must be aligned on pallet.

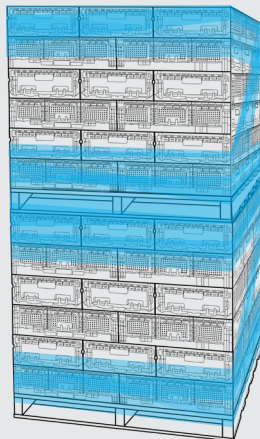
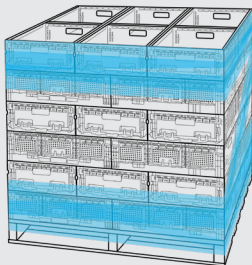


Crates fully assembled and aligned

Ensure all crate latches are fully engaged and crate correctly interlocked with adjacent layers.

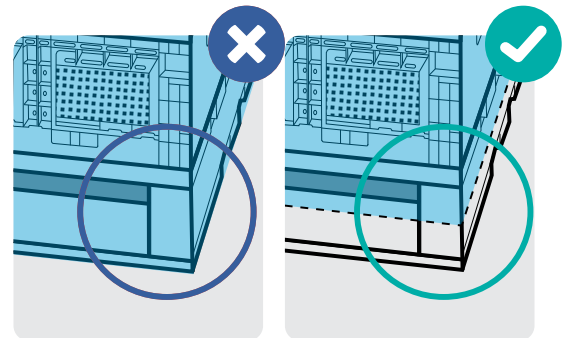


Wrapping for Transportation



Wrapping for transportation

Two top crate layers must be secured with restraining material. Two bottom crate layers must be secured to the pallet with restraining material. When double stacking, sandwich pallet must be secured to adjacent crate layers.



Wrapping Coverage of Pallet

The stretch wrap must be secured to the top half of the actual wooden pallet.

Do not stretch wrap to the bottom of the pallet. This could lead to safety issues in the supply chain.

Safe Load Limits

Standard crate weight limit 16kg. Maximum Pallet weight limit 1100kg inclusive of the pallet itself.

If using clear plastic stretch wrap the following recommendations apply:

- A minimum of two layers of material is used for top and bottom crates (if double stacked use three layers for sandwich pallet)
- Film material no less than 20µm thick is proven to achieve better results

The number of wrap passes are recommendations as a starting point. Ensuring safe, stable and secure loads remains the responsibility of the sender.

Size	Length	Width	Height	1.8m Single Pallet		1.2m Max - Double Stacked 2.4m Max	
				Tl	Hi	Tl	Hi
12L E Crate	385 mm	289 mm	129.5 mm	12	12	12	8
17L A Crate	578mm	385mm	94.5mm	6	17	6	11
27L F Crate	578mm	385mm	142.5mm	6	11	6	7
33L B Crate	578mm	385mm	172.5mm	6	9	6	6
41L C Crate	578mm	385mm	210.5mm	6	8	6	5

Other Information

Crate storage

Intellicrates® should be stored in dry conditions at temperatures below 50°C and protected from UV-light. Improper storage can initiate degradation, which results in odour generation and colour changes and can have negative effects on the physical properties of the crate.

Material

Food contact approved Polypropylene.

Safety

The product is not classified as a hazardous preparation. VPS Intellicrates® remain the property of VPS.

Damaged Crates

If you receive damaged crates please contact customer service immediately. Please refer to all available contact details on the next page.

Collecting Intellicrates® from VPS Wash Centres

After placing your Intellicrate® order through the VPS Customer Portal www.viscountpooling.com a sales order acknowledgement will be available to print. Ensure your nominated transport provider arrives at the VPS wash centre with this document to ensure timely loading of your order. Intellicrates® will be made available in pallet quantities of 186 units, column stacked in a 6 per layer configuration.

Supplying Packed Produce Intellicrates® to Retailers

When your produce is packed and ready to ship, stack crates onto the preferred pallet while adhering to the packaging specifications for unit loads and stacking requirements.

Produce identification should only be placed into the relevant tabs shown below. Identification should be in the form of a paper label. Please do not affix any adhesive labels to the crate at any time.

Documentation

When transferring crates to the retailer, please use the VPS Customer Portal to record your transfer and generate a transfer docket that MUST be shipped with your crates. The docket is to be printed directly from the portal AT ALL TIMES.



VPS Customer Service



1800 316 697



www.viscountpooling.com



vps.support@viscount.com.au



VPS Melbourne

77–89 Dohertys Road,
Altona Nth VIC 3085



VPS Sydney

89 Quarry Road,
Erskine Park NSW 2759



VPS Brisbane

62 Stradbroke Street,
Heathwood QLD 4110



VPS Perth

86 Harrison Road,
Forrestfield WA 6058

SA Depot

GTS Freight Management
4 Gidgie Ct,
Edinburgh SA 5111

TAS Depot

VIP Steel
62–78 Devonport Road,
Devonport TAS 7310

Nth QLD Depot

Toll NQX
12–14 Toll Street,
Bohle QLD 4818